

## FLOWER STEMS

a quilt featuring the color palette from  
the Emerge Circle logo



For the July quilt, I'm using the color palette from our logo.  
Salmon, Dark Grey, Light Green, White, Light Blue, Peach and Yellow

Use SOLIDS only.

Use any brand of solid that matches the color palette.

You don't have to use Kona. I used Play Crafts' Palette Builder to generate the Kona colors, but it's just for guidance.

**MAKE one (1) 18.5" unfinished block and  
MAKE one (1) 12.5" unfinished block**

Make each of the 6.5" blocks (see next page) using small, medium and large strips --- think of it as improv rail fence blocks.

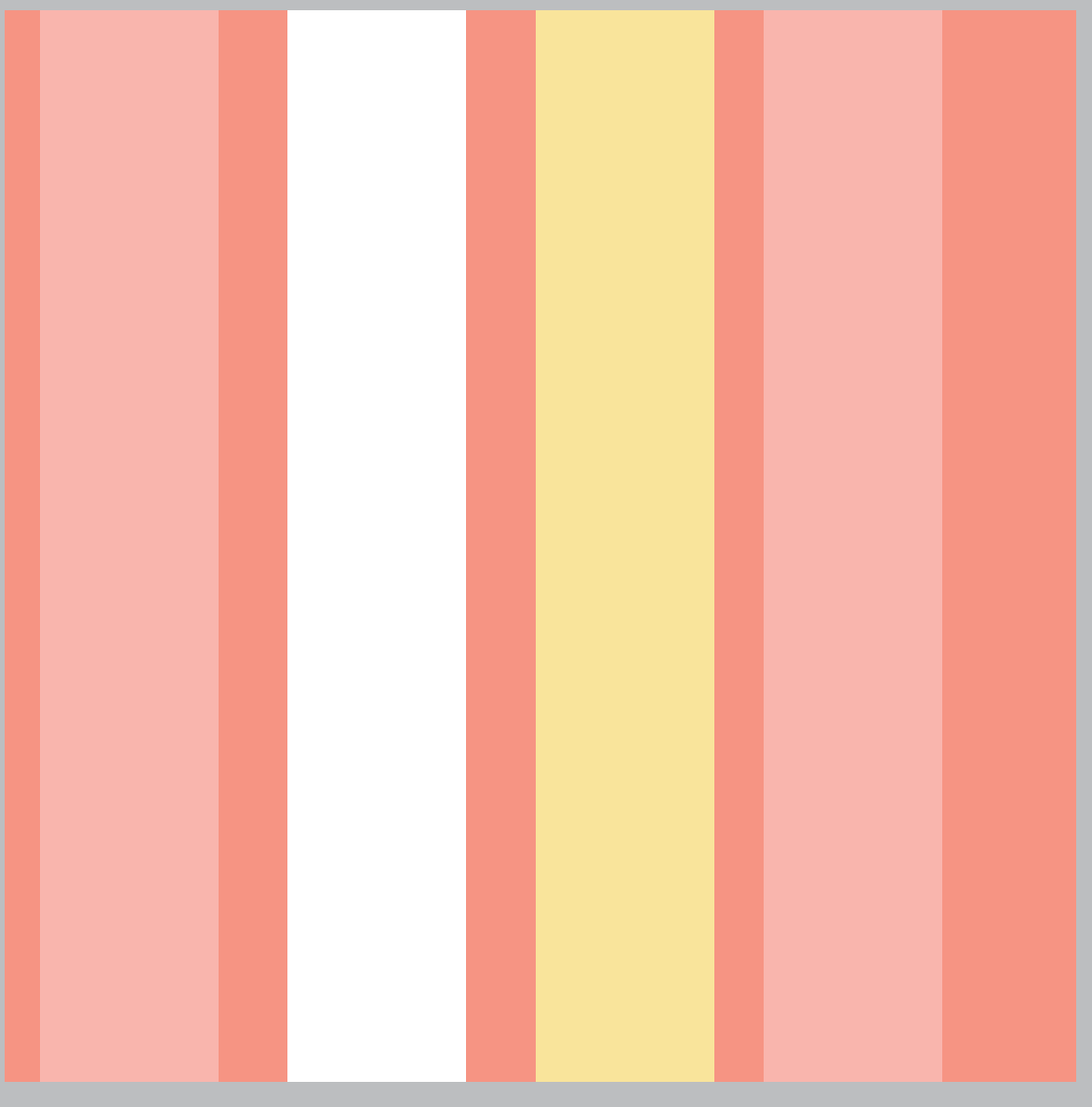
See the last page for an example of the ones I made.



# Emerge Circle

July 2018 Block Instructions

Make ten (10) 6.5" improv blocks. Feel free to strip piece (example on last page)

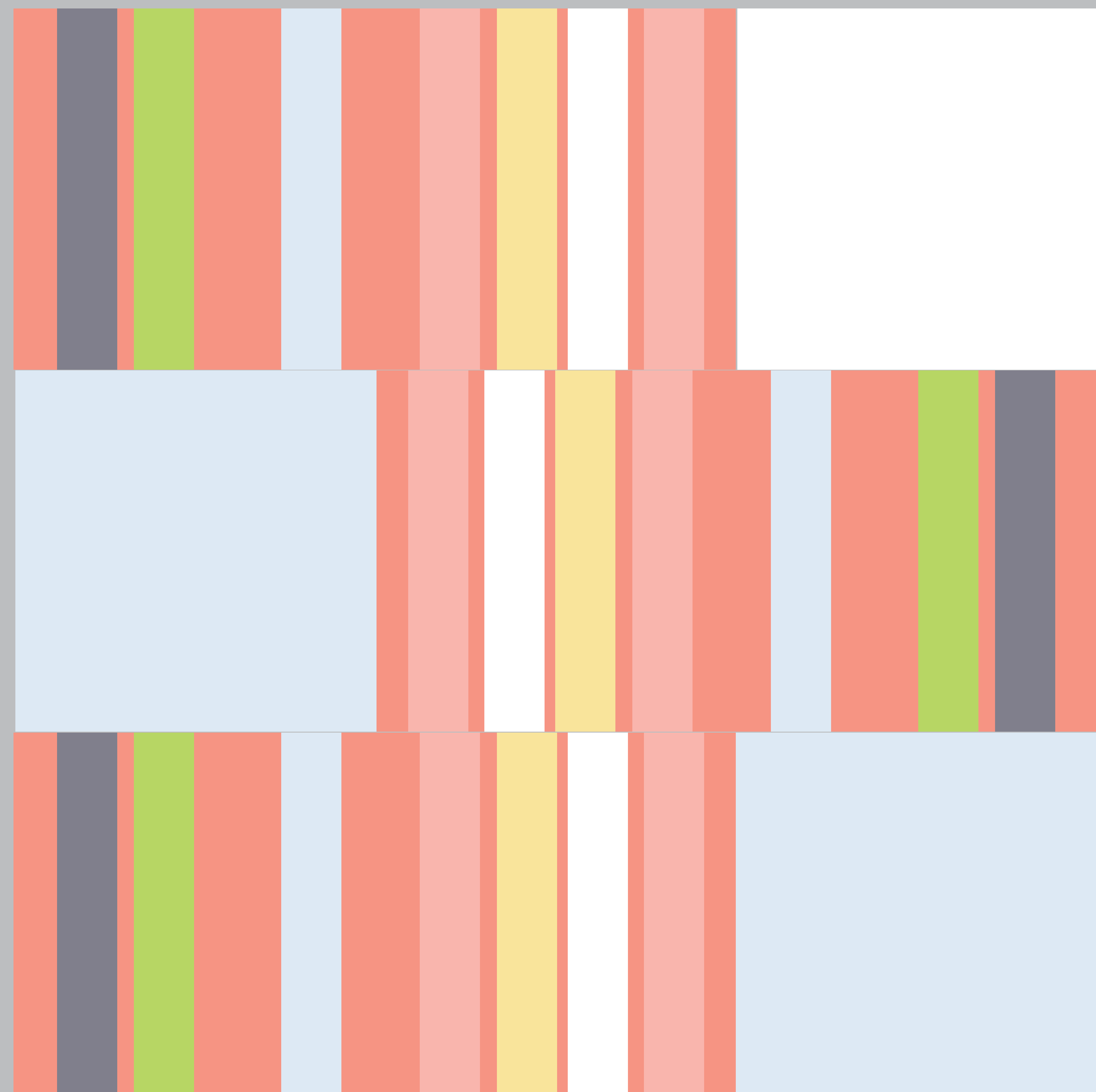


Use small, medium and large strips of solids, any size, any color from the color palette.

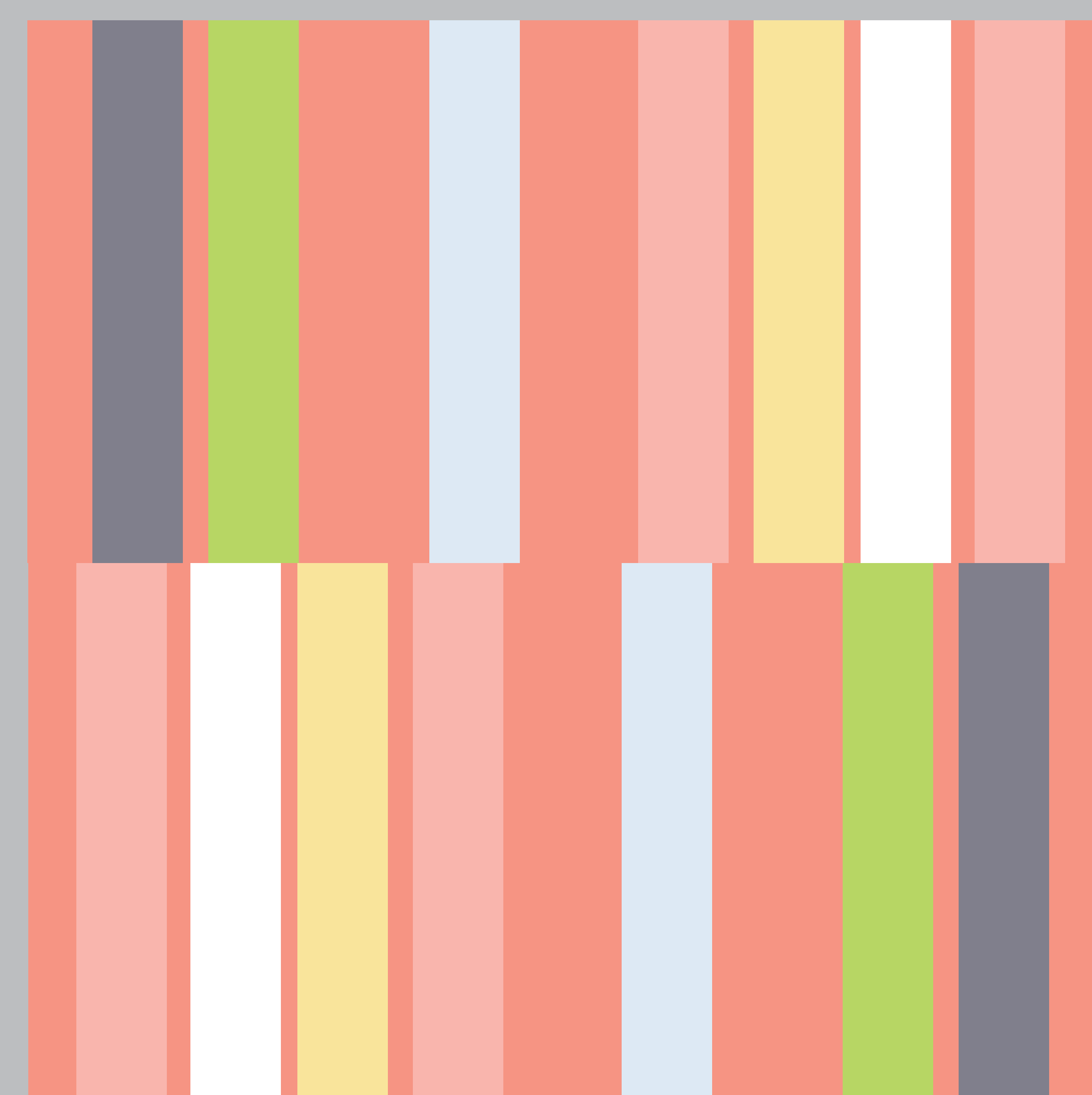
Cut three (3) 6.5" blocks (any color) for the 18.5" block

The diagram is for inspriation and guidance only

One (1) 18.5" by 18.5" unfinished



One (1) 12.5" by 12.5" unfinished



## Make a 9-patch

--Sew (3) 6.5" blocks to make Row 1  
press as you desire

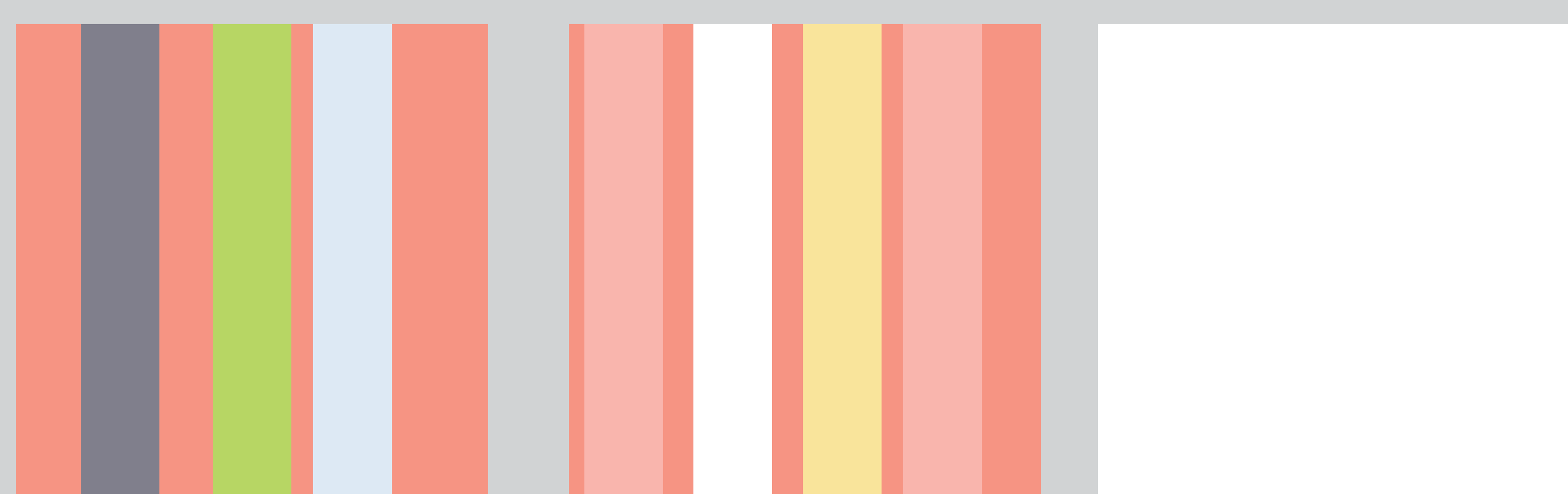
--Sew (3) 6.5" blocks to make Row 2  
press as you desire

--Sew (3) 6.5" block to make Row 3  
press as you desire

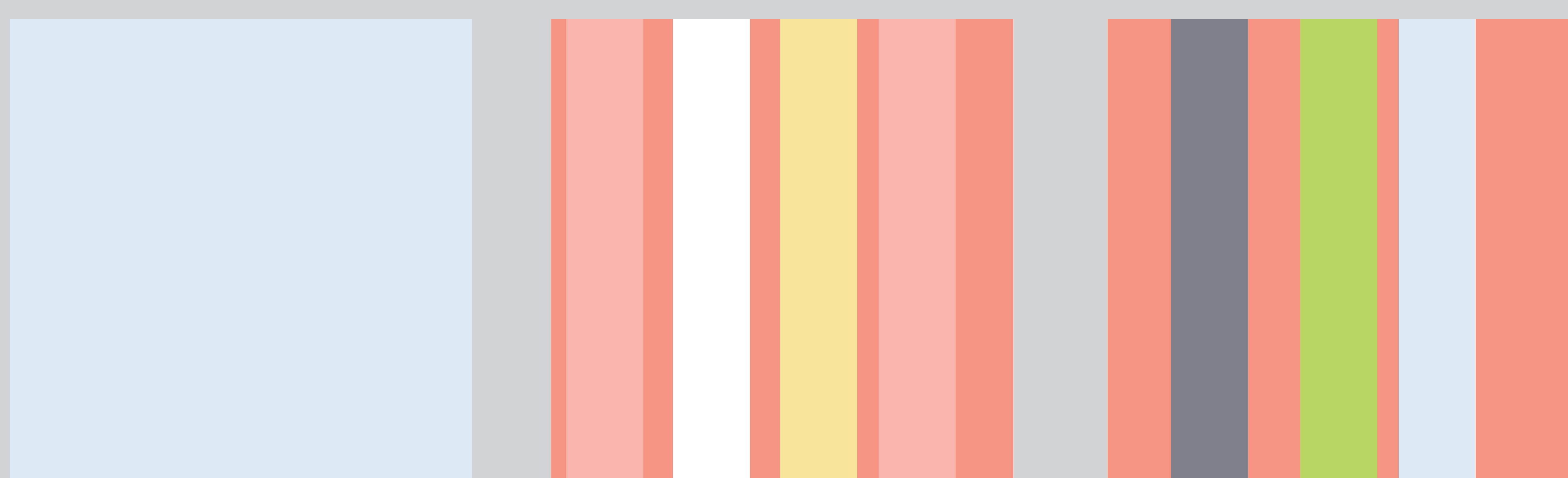
Sew Row 1 to Row 2  
press as you desire

Sew Row 1/2 unit to Row 3

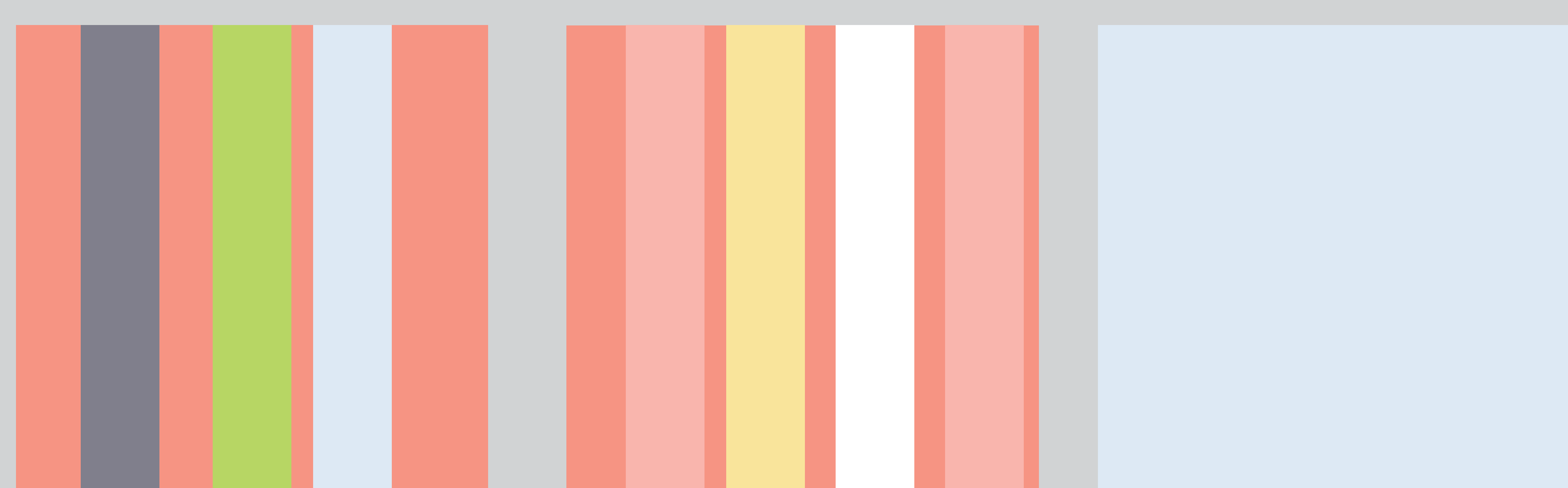
Row 1



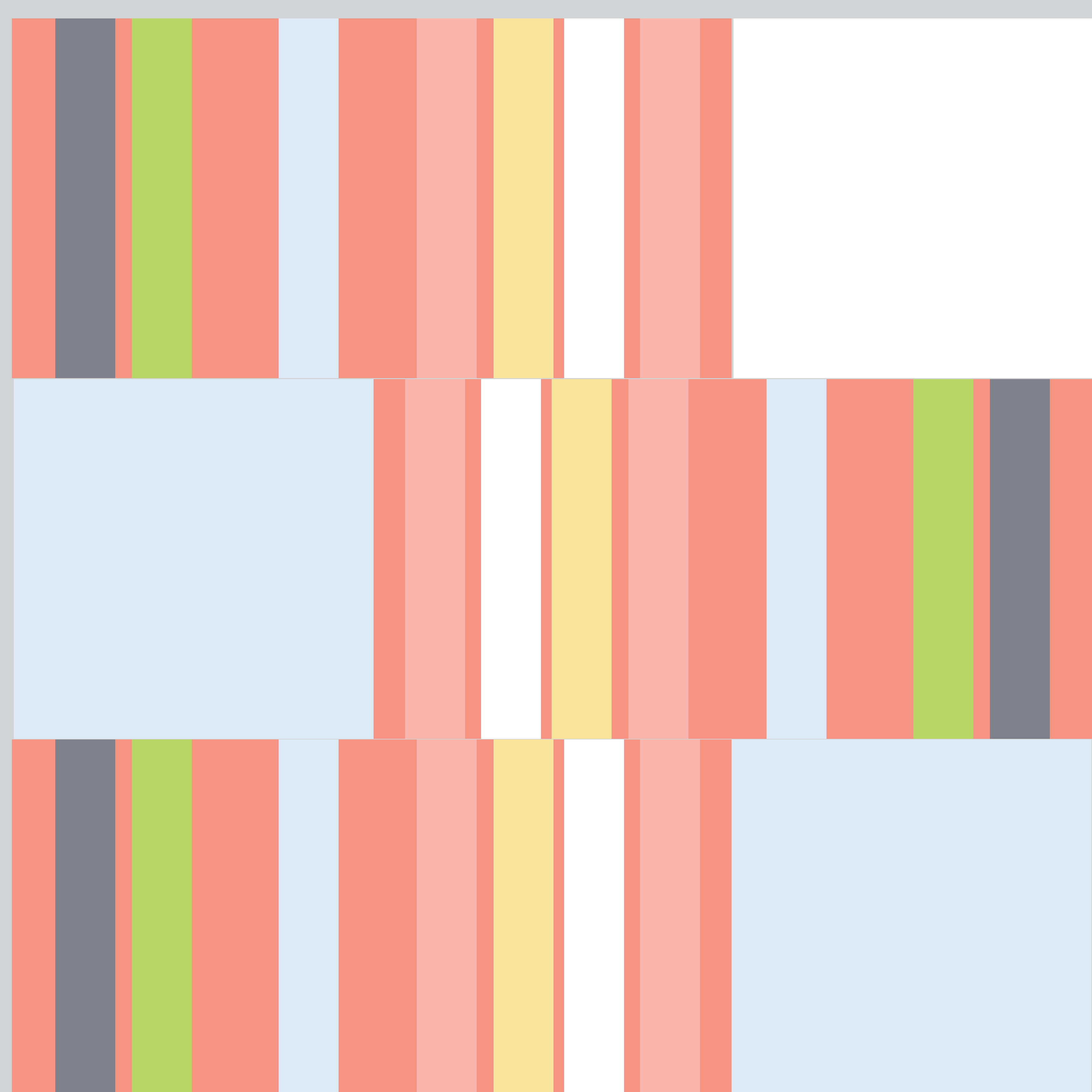
Row 2



Row 3



One (1) 18.5" by 18.5" unfinished

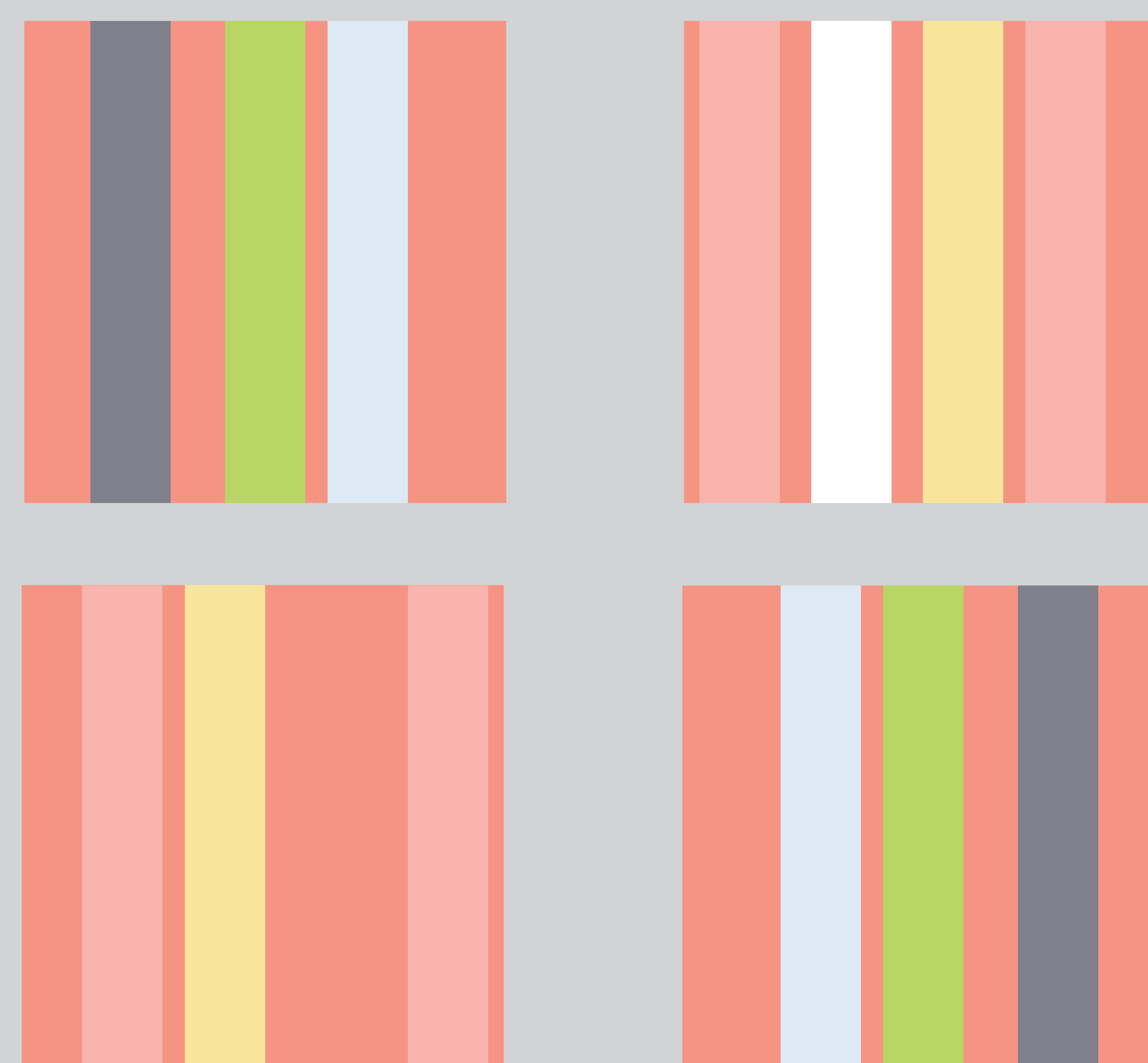


## Make a 4-patch

--Sew (2) 6.5" blocks to make Row 1  
press as you desire

--Sew (2) 6.5" blocks to make Row 2  
press as you desire

Sew Row 1 to Row 2  
press as you desire



Row 1

Row 2

One (1) 12.5" by 12.5" unfinished





